

**ALPS TOOL****SHORT BAR FEEDER****ASQ-E120**

ASQ-E120 is multi kind small volume production type the air less bar feeder system to cope with the need wanting "showing 100% of high performance and high accurate machining of NC lathe, unmanned production of finished goods directly from the bar material.

**ASQ-E120****FEATURES**

- In processing, no vibration no noise occurs because feed pipe is separated from bar.
- The function to take out materials quietly is realizes quieter factory environment.
- Total length of bar feeder is saving space type to make handling easy, and it's easy for later installation.
- Having various built-in self diagnosis function, including random length bar measurement, support unmanned operation safely.

**ALPS TOOL CO., LTD.**

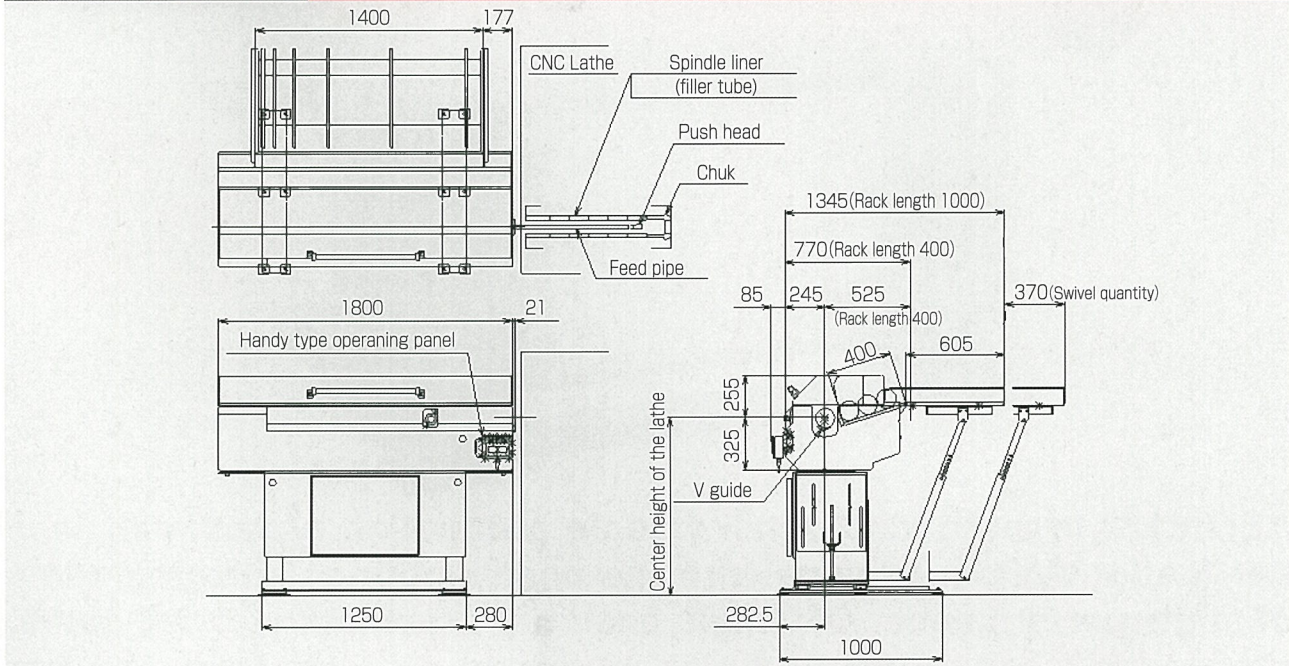
# SHORT BAR FEEDER ASQ-E120

## SPECIFICATIONS

Bar Diameter	$\phi 8 \sim \phi 120\text{mm}$ HEX10~HEX100mm	
Bar Length	300mm~1,400mm Random Length Available ※However, the length from lathe spindle rear end top cut position is the maximum.	
Remainder bar Recovery Quantity	400mm type $\phi 120 \rightarrow 3\text{pcs}$ (Option) 1000mm type $\phi 120 \rightarrow 8\text{pcs}$	Weight of the material (60kg/maximum per one)
Residual Treatment	Front Ejection. or Introduction only	
Feed Pipe & bar O.D.	12 type : $\phi 8 \sim \phi 30\text{mm}$ 16 type : $\phi 17 \sim \phi 50\text{mm}$ 33 type : $\phi 34 \sim \phi 120\text{mm}$	
Power Source	AC200V 50/60Hz 2.0KVA	
Control	Sequencer · Servo motor	
Weight	550Kg (400mm type)	

※ Specifications may be changed without notice for improvement.

## DIMENSIONAL DRAWING



## CARE FOR OPERATION

- (1) By the bar size to be used, it is necessary to exchange a feeding pipe to the 33 type, 16 type or 12 type.
- (2) Spindle liner having I.D. of processing bar O.D. +1mm size must be equipped in the main spindle of the CNC lathes.
- (3) Dimension 1800mm is our standard. The size is +300mm or +600mm when the spindle length of the CNC lathe is longer than 1300mm.

 **ALPS TOOL CO., LTD.**

<http://www.alpstool.com/> E-mail: [alpstool@alpstool.com](mailto:alpstool@alpstool.com)

HEAD OFFICE:  
10070 Sakaki, Sakaki-machi, Hanishina-gun,  
Nagano-ken, 389-0601 Japan.  
TEL : 0268-82-2511 FAX : 0268-82-7368