

ALPS TOOL**SHORT BAR FEEDER****ASQ-E80**

ASQ-E80 is multi kind small volume production type **the air less** bar feeder system to cope with the need wanting "showing 100% of high performance and high accurate machining of NC lathe, unmanned production of finished goods directly from the bar material

ASQ-E80 FEATURES

- Depending on input material size in the control panel, make the period of time of bar change fairly short. ■ Automatic adjustment of a material take-out position.
- In processing, no vibration nor noise occurs because feed pipe is separated from bar.
- Total length of bar feeder is saving space type to make handling easy, and it's easy for later installation.
- Having various built-in self diagnosis function, including random length bar measurement, support unmanned operation safely.

**ALPS TOOL CO., LTD.**

SHORT BAR FEEDER

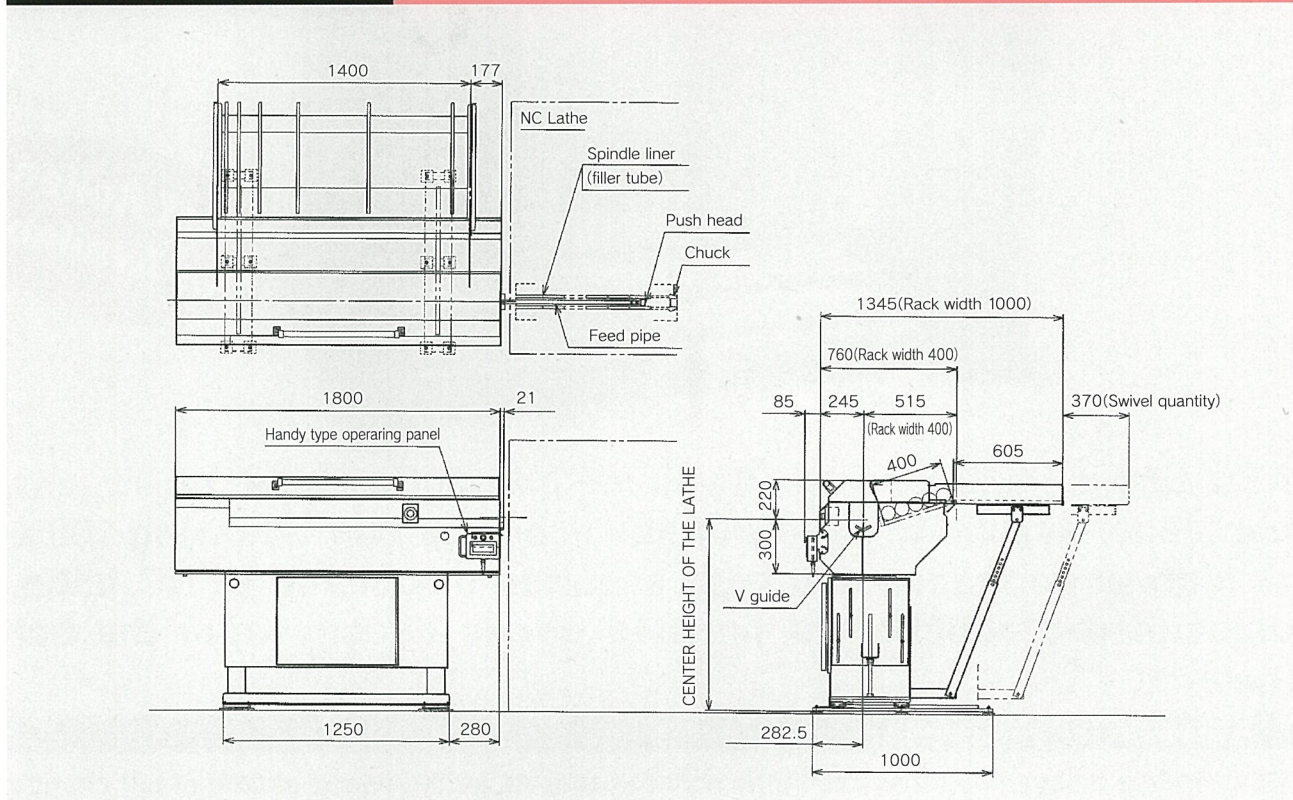
ASQ-E80

SPECIFICATION

Bar Diameter	$\phi 8 \sim \phi 80\text{mm}$ (HEX10~HEX68mm)
Bar length	150~1,400mm Random Length Available ※However, the length from lathe spindle rear end to top cut position is the maximum.
Remainder bar	400mm type $\phi 80 \rightarrow 5\text{pcs}$
Recovery Quantity	1,000mm type $\phi 80 \rightarrow 12\text{pcs}$
Residual Treatment	Front Ejection, or Introduction only
Feed Pipe & bar O.D.	12 type : $\phi 8 \sim \phi 30\text{mm}$ 16 type : $\phi 17 \sim \phi 50\text{mm}$ 33 type : $\phi 34 \sim \phi 80\text{mm}$
Power Source	AC200V 50/60Hz 2.0KVA
Control	Sequencer · Servo motor
Weight	540Kg (400mm type)

※Specifications may be changed without notice for improvement.

DIMENSIONAL DRAWING



Dimension 1800 is our company preferred size.

The NC lathe is +300 or +600 when a main spindle is longer than 1300.



ALPS TOOL CO., LTD.

<http://www.alpstool.co.jp/> E-mail: alpstool@alpstool.com

HEAD OFFICE

10070 Sakaki, Sakaki-machi, Hanishina-gun,
Nagano-ken, 389-0601 Japan.
TEL:0268-82-2511 FAX:0268-82-7365