

ALPS TOOL

OIL TYPE MAGAZINE BAR FEEDER

Set-up change is
only by finger chucks.

ASR RX45Ev

ASR RX51Ev



Based on our original technology, ASR RX45Ev and RX51Ev are the latest models for medium and large diameter CNC lathes in order to aim at a further rotation performance improvement and a quieter factory environment.

It adopts the multi-hybrid support that improves a fluid characteristic of oil and a characteristic of vibration-proof more than before.

Furthermore, steady rest units are equipped in the top end and middle as standard and improve the effect of noise-proof and vibration-proof.

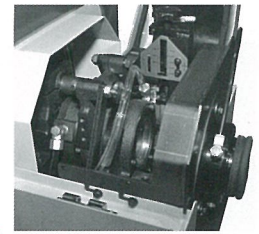
This model is the high performance oil feeder that regards stability at high-speed and safety as important.

ASR RX45Ev · 51Ev FEATURES

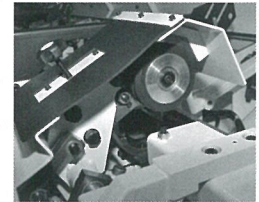
- Set-up change is finished only by finger chucks and adjustment.
- Double feed-rods (PAT) improve vibration-proof performance in the main spindle.
- Accurate remnant discharge (PAT.P) realizes stable and continuous operation.
- Servomotor drive realizes stable feeding control.
- The upper cover is possible to be opened and closed from either the front or the rear, and set-up change and maintenance are easier.

OIL TYPE MAGAZINE BAR FEEDER

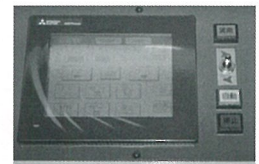
ASR RX45Ev·51Ev



Top End Steady Rest Unit



Middle Steady Rest Unit



Operation Panel

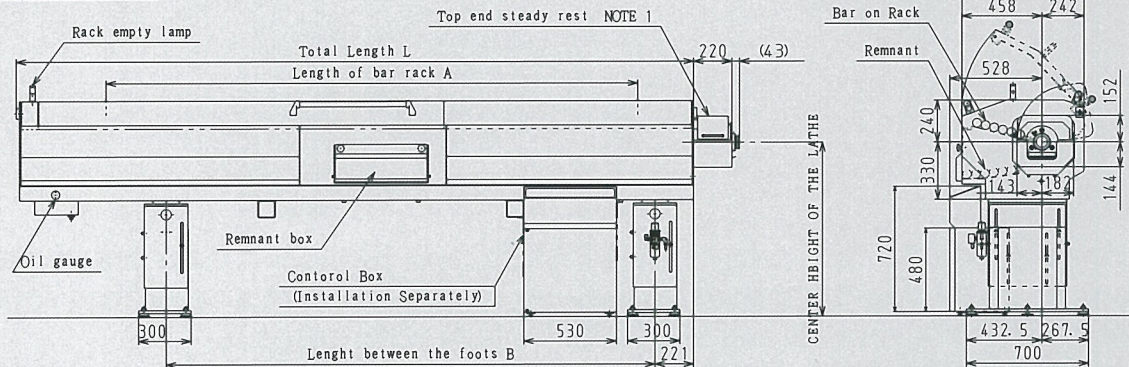
SPECIFICATIONS

Bar Diameter	RX45Ev	42 type : $\phi 8 \sim \phi 37\text{mm}$ ($\sim \phi 42\text{mm}$)	H10~H30mm
		45 type : $\phi 8 \sim \phi 40\text{mm}$ ($\sim \phi 45\text{mm}$)	H10~H35mm
	RX51Ev	51 type : $\phi 8 \sim \phi 45\text{mm}$ ($\sim \phi 51\text{mm}$)	H10~H38mm
		*Step-cut machining at rear end of bars is needed to reach the measurement in parentheses.	
		*Bar diameter is decided by the maximum machining diameter of lathes.	
		Small Diameter Option : 20 type $\phi 5 \sim \phi 16\text{mm}$	H5~H14mm
		(Support and FP are needed to be changed)	
Rack Capacity	$\phi 10 \rightarrow 30\text{pcs}$ · $\phi 45 \rightarrow 7\text{pcs}$ · $\phi 51 \rightarrow 6\text{pcs}$		
Bar Length	2.5m	3.0m	4.0m
Remnant	Remnant Retract(70mm~500mm)		
Feed Speed	Forward 350mm /sec(MAX) Backward 700mm /sec(MAX)		
Feed Force	MAX 400N(40.8kgf)		
Power Source	AC200V. 3PH 50/60 Hz 2.0kVA		
Air Pressure	0.5~0.7MPa(5~7kgf/cm ²)		
Oil Used	ISO VG32~100	2.5m→55ℓ	3.0m→60ℓ 4.0m→70ℓ
Weight	2.5m→1,050kg	3.0m→1,100kg	4.0m→1,250kg

※Specifications may be changed without notice for improvement.

DIMENSIONAL DRAWING

Basic Type



※1. The length of the top end steady rest will be changed in accordance with the models of NC lathes.

◎ Type (R)-the bar rack and the remnant box are reversed-is available. Please ask us in placing an order.

◎ When basic type is installed at the right side of a lathe, the operation side (control box) is the reverse side of the bar rack and the remnant box.

DIMENSIONS SPECIFICATIONS	L	A	B
2.5m Spec	3,380	2,530	2,300
3.0m Spec	3,880	3,030	2,800
4.0m Spec	4,880	4,030	3,800

CARE FOR OPERATION

- (1) When bar diameter is larger than max. ID of finger chuck, give the step-cut machining to the rear end of bar.
- (2) Parts for set-up change, options and other special specifications are handled separately.
- (3) Select rotation speed to comply with the bar-bend-accuracy.
(Bar bend MAS standard B class or better, Larger bend 0.5mm or less per 1m)

ALPS TOOL CO., LTD. ALPS TOOL (THAILAND) CO., LTD. ALPS TOOL (DALIAN) CO., LTD.

<http://www.alpstool.co.jp/> E-mail:alpstool@alpstool.co.jp

HEAD OFFICE
10070 Sakaki-machi, Hanishina-gun, Nagano-ken, 389-0601 Japan.
TEL : 0268-82-2511 FAX : 0268-82-7368